

*ANTH-280-002*

*Haley Fussner*

*December 10 2007*

*Archaeology Internship*

*Semester Research Paper*

*Summer of 2007 Field School*

## **INTRODUCTION**

### **2007 Summer Field School**

Over the summer of 2007, between June 11 and July 20, excavation was conducted by 11 students, and one intern, led by Totah Archaeological Project director and Point Site authority Linda Wheelbarger. Students ranged in age from 16-62, and included intern Jennifer Buchi, and field school students Christine Font, Haley Fussner, Kelsey Kennedy, Greg Lou, Bill Millward, Steve Olle, Donna Pugh, Marissa Street, Melissa Thayer, Dave Whitt, and Emily Zach. The participants came from Utah, Arkansas, New Mexico, Colorado, Nevada, California, Illinois, Arizona, Alabama, Virginia, New York, and Washington, respectively.

### **Point Site History: Past and Present**

The Point Site, LA 8619, is located on the B Square Ranch (Figure 1). It is a large Puebloan habitation built in a spectacular dominating position on a semi-circular upper bench on the face of the northern-most point of the bluffs (Wheelbarger 2006a:8). Wheelbarger (2006a:9) indicates that the Point Site dates from AD 800-1300, spanning the late ancestral Puebloan time period, with a possible early ancestral Puebloan occupation.

The Point site was most likely the major center for Totah Puebloans in this area. It has a clear view of the west, north, and south; and a view of nearly all impressive landmarks in the San Juan Basin area, including Angel Peak and Harris Mesa. The Point Site is also in a prime position to communicate with other great houses, including Aztec and Salmon (Wheelbarger 2006b).

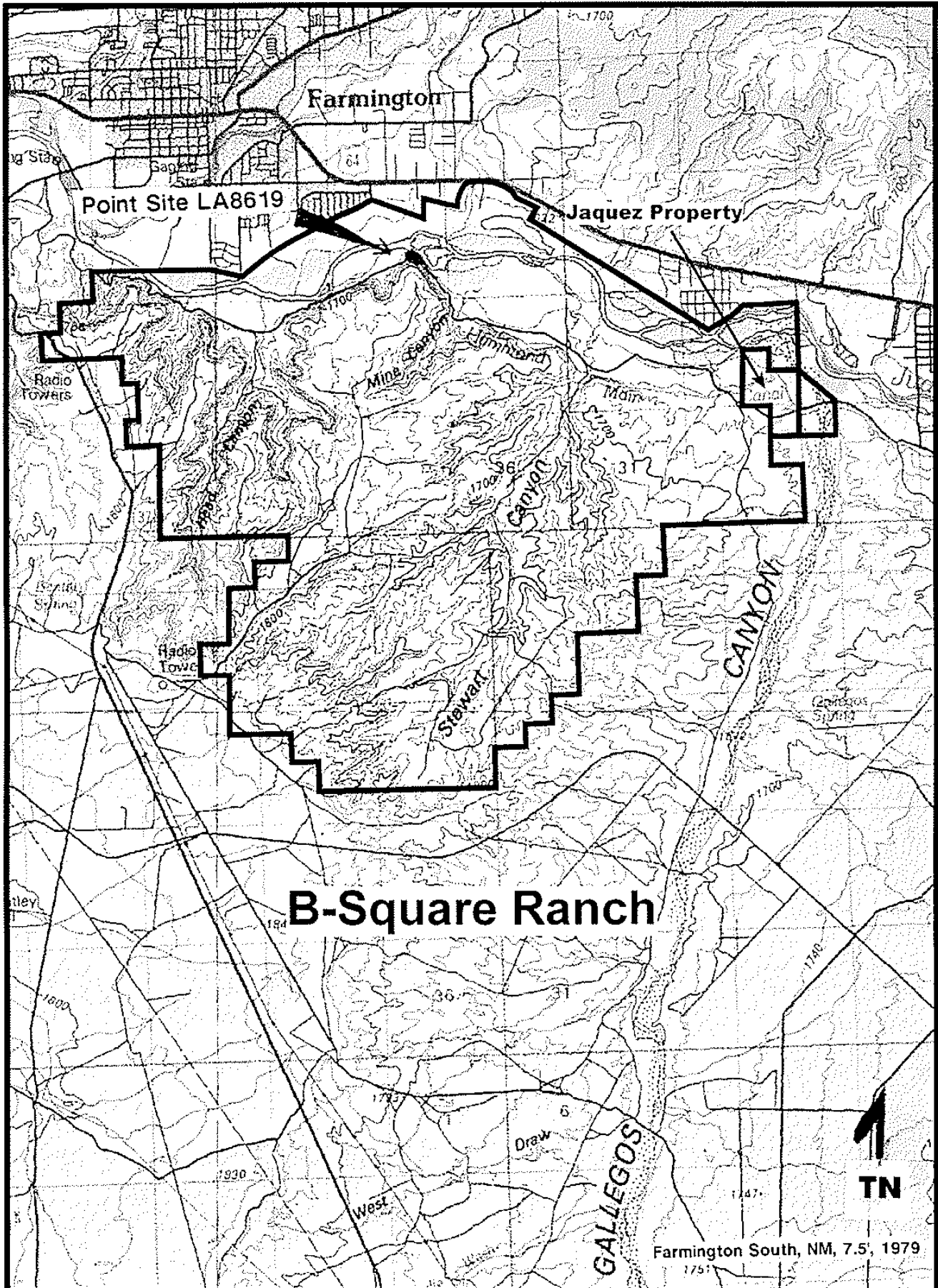


Figure 1. Point Site LA8619 Location on the B Square Ranch.

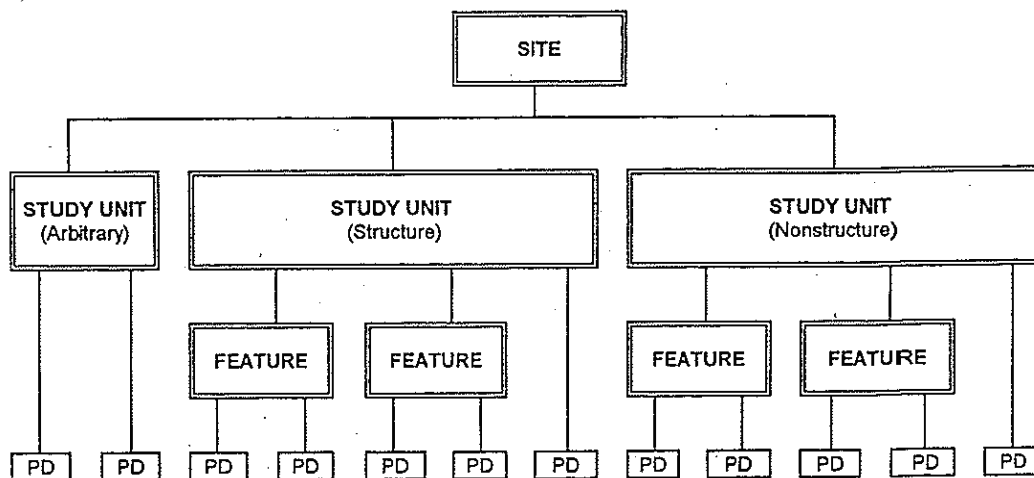
In the mid 1900's, a road—The Tennessee Boulevard—was bulldozed through the site. This road was a major oil and gas route, and the site was heavily potted by locals and workings using the Tennessee Boulevard. Fortunately, the site has been protected since 1957, when Tom Bolack purchased around 4000 acres, which included the Point Site, as well as several others. Another aid to the preservation of the Point Site is its extreme size. At nearly five acres, the Point Site is one of the largest settlements in the area. Because of the Point Site's size, much of it still remains intact, even through the years of destruction.

In 2006, after eight years of excavation at the Tommy Site, a nearby site of similar pedigree, the San Juan College Cultural Resource Management Project began gridding the Point Site, for eventual excavation. The last two weeks of the 2006 summer field school was spent excavating five units. The units were 162N 108E, 162N 110E, 164N 110E, 166N 110E, and 168N 110E. Walls were found in 162N 110E and 168N 110E. These walls proved to continue in the 2007 summer field school, and parts of walls were found in ten of the 17 units excavated.

## METHODS

The students were split into five dig crews of two, with one comprised of three students. Dig crews were assigned a number ranging from 1-5 and used a dig crate of the corresponding number, and all forms were filed by the number also. Dig crates included trowels, picks, paintbrushes, dust brooms, dust pans, a plastic pitcher to hold artifacts, and clipboards. Also included was a toolbox holding smaller and more delicate items such mechanical pencils, sharpies, provenience labels, paper bags, line levels, rubber bands, a protector/scale, and a three or eight meter tape measure.

We tracked our progress and finds using the San Juan College Cultural Resource Management Project provenience system (Kotyk 1999:1), which is a three part hierarchal system: *Site*, *Study Unit*, and *Feature* (Figure 2). Information on proveniences and artifacts are collected on forms using codes defined by provenience designation codes (Figure 3) and field specimen codes (Figure 4).



**Figure 2. Provenience System**

**PROVENIENCE DESIGNATION (PD) CODES**

SJC-CRMP

STUDY UNIT TYPE		HORIZONTAL CODES		LEVEL CODES		STRAT CODES		CONTEXT CODES	
Code	Description	Code	Description	Code	Description	Code	Description	Code	Description
10	Arbitrary Unit	10	Surface stripping	10	Modern ground surface	0	Modern ground surface	10	Modern ground surface
20	Structure	11	Trench	15	Vertical face-profile	1	Strat 1	15	Multiple deposits
50	Nonstructure	12	Auger test	20	Arbitrary (5cm)	2	Strat 2	21	Cultural, primary refuse
	<b>FEATURE</b>	13	Shovel test/trench	21	Arbitrary (10cm)	3	Strat 3	22	Cultural, secondary refuse
	Code	20	50-by-50-cm square	22	Arbitrary (20cm)	4	Strat 4	23	Cultural, de facto refuse
	Description	21	1-by-1-m square	23	Arbitrary (21-50cm)	5	Strat 5	24	Cultural, mixed refuse
10	Asphalt - adobe lined	22	1-by-2-m square	24	Arbitrary (51-100cm)	6	Strat 6	25	Cultural, other
11	Asphalt - earthen	23	2-by-2-m square	25	Arbitrary (1.0-1.5m)	7	Strat 7	28	Cultural, not specified
12	Asphalt - slab-lined	24	4-by-4-m square	26	Arbitrary (1.5-2.0m)	8	Strat 8		
13	Asphalt - adobe and slab	25	5-by-5-m square	30	Strat (0-5cm)	9	Strat 9		
14	Asphalt - other	27	10-by-10-m square	31	Strat (6-10cm)	10	Strat 10		
20	Thermal - adobe lined	28	20-by-20-m square	32	Strat (11-20cm)	11	Strat 11		
21	Thermal - earthen	30	Complete horizontal	33	Strat (21-50cm)	12	Strat 12		
22	Thermal - slab-lined	40	North 1/2	34	Strat (51-100cm)	13	Strat 13		
23	Thermal - adobe and slab	41	South 1/2	35	Strat (1.0-1.5m)	14	Strat 14		
24	Thermal - other	42	East 1/2	36	Strat (1.5-2.0m)	15	Strat 15		
30	Pit - adobe lined	43	West 1/2	50	Fill above floor (5cm)	16	Strat 16		
31	Pit - earthen	44	Northeast 1/2	51	Fill above floor (10cm)	17	Strat 17		
32	Pit - slab-lined	45	Northwest 1/2	52	Fill above floor (20cm)	18	Strat 18		
33	Pit - adobe and slab	46	Southeast 1/2	53	Fill above floor (21-50cm)	19	Strat 19		
34	Pit - other	47	Southwest 1/2	54	Fill above floor (51-100cm)	20	Strat 20		
40	Bin - adobe lined	50	North 1/4	55	Fill above floor (1.0-1.5m)	30	Multiple strats		
41	Bin - earthen	51	South 1/4	56	Fill above floor (1.5-2.0m)	41	Floor #1		
42	Bin - slab-lined	52	East 1/4	59	Floor contact	42	Floor #2		
43	Bin - adobe and slab	53	West 1/4	60	Fill above surface (5cm)	43	Floor #3		
44	Bin - other	54	Northeast 1/4	61	Fill above surface (10cm)	61	Surface #1		
48	Mealing bin	55	Northwest 1/4	62	Fill above surface (20cm)	62	Surface #2		
49	Mealing trough	56	Southeast 1/4	63	Fill above surface (21-50cm)	63	Surface #3		
50	Post/posthole - primary	57	Southwest 1/4	64	Fill above surface (0.5-1.0m)	64	Surface #4		
51	Post/posthole - secondary	60	North portion	65	Fill above surface (1.0-1.5m)	97	Not applicable		
52	Post/posthole - ladder	61	South portion	66	Fill above surface (1.5-2.0m)	98	Unknown		
53	Post/posthole - indetermin.	62	East portion	69	Surface contact	99	Indeterminate		
60	Bench	63	West portion	999	Unexcavated/sampled only				
61	Deflector	64	Northeast portion						
62	Floor vault	65	Northwest portion						
63	Platform	66	Southeast portion						
64	Recess	67	Southwest portion						
65	Tunnel	70	Partial excavation						
66	Vent shaft/tunnel								
67	Wall niche								
68	Wingwall								
90	Burial - human								
91	Burial - animal								
100	Fire-cracked rock								
101	Rock alignment/pile/locator								
102	Trash lens								
104	Ephemeral stain								
997	Natural phenomenon								
998	Other								
999	Unknown								

**SCREEN SIZE**

Code	Description
0	Not screened
1	1/4-inch screened
2	1/8-inch screened
3	1/16-inch screened
4	Flotation screened
5	Point located
6	Surface collection
7	Water-screened

Figure 3. Provenience Designation Coding Sheet.

**FIELD SPECIMEN (FS) CODES**

S.JC-CRMP

**CERAMICS (CER)**

Code Description  
 CFG Figurine  
 LDH Ladle/handle handle  
 PIP Pipe  
 SHD Sherd(s)  
 UCL Unfired clay/sherd  
 VES Whole/partial vessel

**FLAKED STONE (FLS)**

Code Description  
 BIF Biface  
 CHO Chopper  
 COR Core  
 DEB Debitage  
 HAM Hammerstone  
 HOE Hoe  
 OBS Obsidian  
 PPT Projectile point  
 RET Retouched flake

**GROUNDSTONE (GRS)**

Code Description  
 ABR Abrader  
 ANV Anvil  
 AXE Axe  
 FET Fetched  
 GFG Figurine  
 GOR Lithic Ornamnt  
 GPG Ground pigment  
 MAN Mano  
 MET Metate  
 MOR Mortar  
 PES Pestle  
 PLS Polishing stone  
 SHS Shaft straightener  
 SLA Slab; ground/enepeel/worked

**UNMODIFIED STONE (UST)**

Code Description  
 CAL Calcite  
 COA Coal  
 CON Concretion  
 FOS Fossil  
 GYP Gypsum  
 MIC Mica  
 MIN Mineral, unknown  
 OQR Quartz crystal  
 TUR Turquoise  
 UPG Pigment, including ochre

**FAUNA (FAU)**

Code Description  
 ANI Animal interment  
 ANT Antler  
 ATL Atlaf/ spur  
 AWL Awl  
 EGG Eggshell  
 FLA Flaker  
 FOR Bone Ornamnt  
 FPL Worked/polished/cut bone  
 GAM Gaming piece  
 NEE Needle  
 POI Point  
 SCR Scraper  
 UMB Unmodified bone

**SHELL (SHE)**

Code Description  
 CRC Coral  
 MAR Marine  
 SOR Shell ornament  
 STL Shell tool  
 TER Terrestrial

**VEGETAL (VEG)**

Code Description  
 BAS Basketry  
 CHA Charcoal  
 COC Corn cobs(s)  
 COK Corn kernels (only)  
 IMP Plant impression  
 NET Netting  
 PLA Plant materials  
 RTH Root thatching  
 SAN Sandals  
 SEE Seeds  
 TEX Textile  
 TWI Twine/rope  
 WFR Wood fragments  
 WWD Worked wood

**FLOTATION (FLO)**

Code Description  
 FAF Artifact vessel fill  
 FBA Burial-anatomical region  
 FBF Burial fill  
 FFC Floor/base contact  
 FFF Floor/base fill  
 FFG General fill  
 FMS Surface control  
 FRS Roof/fall fill  
 FSF Subfloor fill  
 FTF Trash fill

**POLLEN (POL)**

Code Description  
 PAF Artifact vessel fill  
 PBA Burial-anatomical region  
 PBC Burial fill  
 PFC Floor/base contact  
 PFF Floor/base fill  
 PFG General fill  
 PRF Pollen roof/fall  
 PSC Surface control  
 PSF Subfloor fill  
 PTF Trash fill

**PHYTOLITH (PHY)**

Code Description  
 YAF Artifact vessel fill  
 YBA Burial-anatomical region  
 YBC Burial fill  
 YEC Floor/base contact  
 YEF Floor/base fill  
 YFG General fill  
 YRF Roof/fall fill  
 YSC Surface control  
 YTF Trash fill

**WATER-SCREEN (WSC)**

Code Description  
 WAF Artifact fill  
 WFC Floor/surface contact  
 WFF Floor/surface fill  
 WGF General fill  
 WRF Roof/fall fill  
 WSF Subfloor fill  
 WTF Trash fill

**TREE-RING / DENDRO (DEN)**

Code Description  
 DPT Post in situ  
 DRF Roof/fall  
 DEN Dendro, not specified

**RADIOCARBON (C14)**

Code Description  
 CAF Artifact fill  
 CFC Floor/surface contact  
 CFF Floor/surface fill  
 CGF General fill  
 CNF Non-cultural matrix  
 CRF Roof/fall fill  
 CSF Subfloor fill  
 CTF Trash fill

**MISCELLANEOUS (MOT)**

Code Description  
 DAU Adobe/daub/jacal  
 FAR Fire-altered rock  
 FEA Feathers  
 FUR Fur  
 HAI Hair  
 HUM Human burial(s)  
 HMF Human isolated fragments  
 MAG Archeomagnetic samples  
 SED Sediment samples  
 FSC Fine-screen sample  
 THL Thermoluminescence samples

**HISTORIC MATERIALS (HTH)**

Code Description  
 CLO Cloth  
 EAC Euro-American ceramics  
 GLA Glass  
 HBN Bone  
 HSH Shell  
 LEA Leather  
 MTL Metal  
 PTC Plastic  
 RUB Rubber  
 WOO Wood

We gridded the Study Unit 50-1 area, and laid out four rows of 2x2 meter units, from 162N-170N, and from 106E-126E. The main datum is set at 100N 100E with an arbitrary elevation of 100 meters. The main datum of the site is in the southwest corner.

## RESULTS

The goal of the 2007 field school session was to continue work in the Study Unit 50-1 area to the east of the great kiva at the Point Site. We excavated 17 2x2 meter units (Figure 5). Several walls were discovered during the field school, but none have thus far been found to form a complete room. A summary of what was discovered in each of the excavation units is presented below.

### Excavation Unit 162N 112E

The surface of the unit was relatively barren, with two rocks in the northwest corner and two rocks in the southeast corner. It also sloped to the north.

At the bottom of level 2, a very thin, approximately 12 centimeters wide, wall became visible. As excavation continued, it was found that the wall was actually larger. It expanded to 38 centimeters, and it was discovered that there was a significant amount of adobe in the wall. Excavation was initially terminated at level 2, but was later continued one more level.

The third and final level produced the only two axes thus far found on the Point Site.

Items recovered from the unit are shown below in Table 1.

**Table 1. Artifact/Samples from Unit 162N 112E.**

Level/Feature	PD#	Bag#	Type	Count
Level 1	019	1	Sherds	97
	019	2	Debitage	85
	019	3	Chopper	1
	019	4	Unmodified Bone	5
	019	5	Metal	1
	019	6	Pigment	2
Level 2	027	1	Sherds	184
	027	2	Debitage	111
	027	3	Unmodified Bone	40
	027	4	Chopper	1
	027	5	Pigment	6
	027	6	Marine	1
	027	7	Ladle	1
Level 3	053	1	Debitage	125
	053	2	Sherds	108
	053	3	Pestle	1
	053	4	Chopper	1
	053	5	Unmodified	54

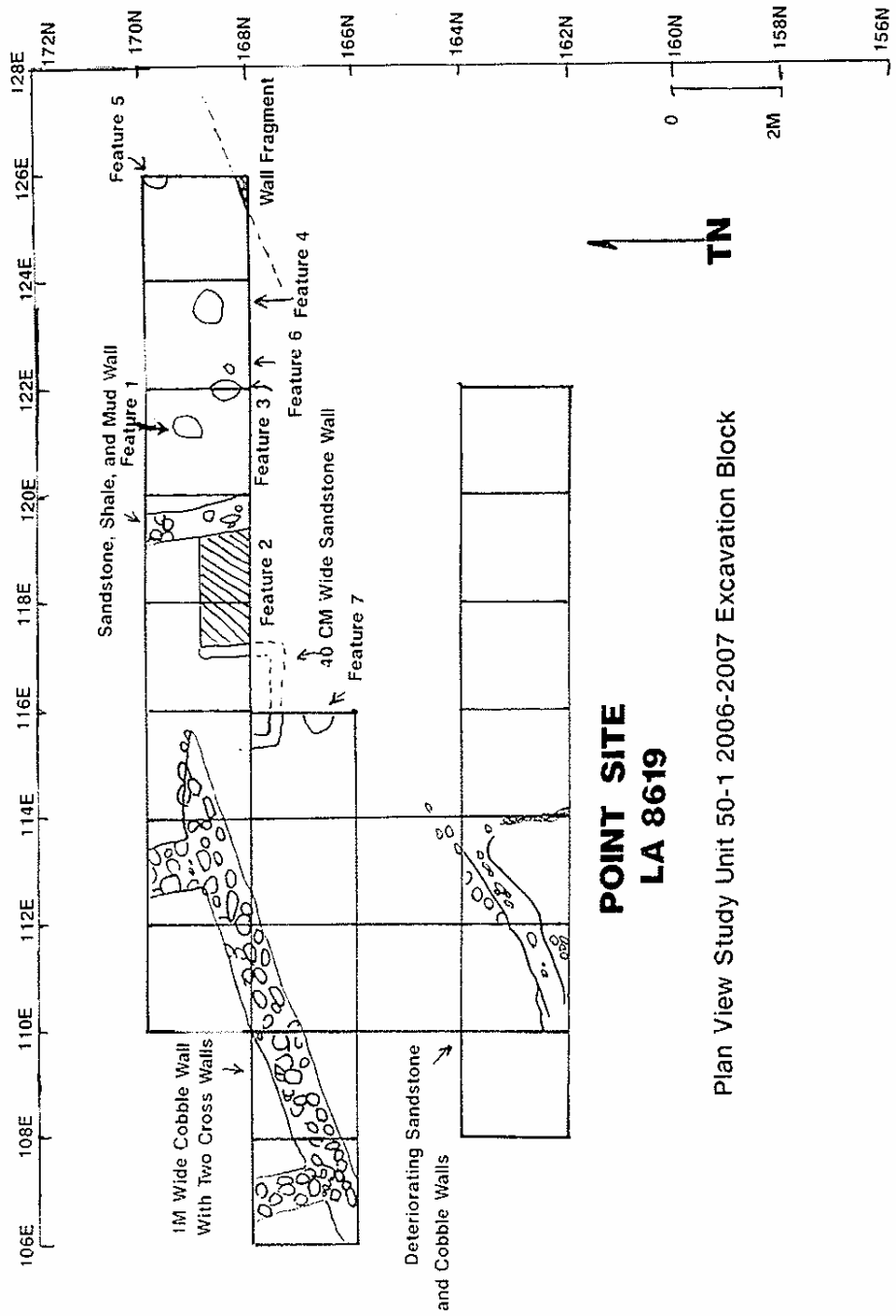
Level/Feature	PD#	Bag#	Type	Count
			Bone	
	053	6	Axe	1
	053	7	Projectile Point	1
	053	8	Core	1
	053	9	Hammerstone	1
	053	10	Axe	1
	053	11	Core	1
	053	12	Core	1
	053	13	Hammerstone	1

### Excavation Unit 162N 114E

There were no rocks visible before excavation. Some scattered ash was found, with a small concentration of ash in the southwest corner. A few small pieces jacal were found. Items recovered from unit are shown below in Table 2.

**Table 2. Artifact/Samples from Unit 162N 114E.**

Level/Feature	PD#	Bag#	Type	Count
Level 1	022	1	Sherds	102
	022	2	Debitage	88
	022	3	Unmodified Bone	11
	022	4	Glass	3
	022	5	Pigment	1
	022	6	Plastic	2
	022	7	Core	1
Level 2	026	1	Sherds	112
	026	2	Debitage	38
	026	3	Unmodified Bone	8
	026	4	Eggshell	1
	026	5	Lithic Ornament	1
	026	6	Corn Cob	4
	026	7	Polishing Stone	1
	026	8	Core	1



**POINT SITE  
LA 8619**

Plan View Study Unit 50-1 2006-2007 Excavation Block

Figure 5. Plan View Study Unit 50-1 2006-2007 Excavation Block

### Excavation Unit 162N 116E

Small isolated rocks were found in the southeast corner. There was charcoal and small pieces of jadal throughout level 1, but had decreases significantly by level 2. Large quantities of artifacts were recovered, with the majority being sherds (Table 3).

**Table 3. Artifact/Samples from Unit 162N 116E.**

Level/Feature	PD#	Bag#	Type	Count
Level 1	023	1	Sherds	179
	023	2	Debitage	114
	023	3	Unmodified Bone	5
	023	4	Pigment	3
	023	5	Core	1
	023	6	Core	1
	023	7	Core	1
Level 2	024	1	Sherds	151
	024	2	Debitage	106
	024	3	Bone Ornament	1
	024	4	Lithic Ornament	1
	024	5	Mineral	2
	024	6	Unmodified Bone	1
	024	7	Eggshell	1

### Excavation Unit 162N 118E

Originally, there was thought to be a wall, but it was determined by the end of the second level that it was not, and this unit was thought to be the inside of a room. This unit had a diverse and unique display of artifacts (Table 4).

**Table 4. Artifact/Samples from Unit 162N 118E.**

Level/Feature	PD#	Bag#	Type	Count
Level 1	035	1	Debitage	89
	035	2	Sherds	120
	035	3	Metal	2
	035	4	Core	1
Level 2	040	1	Sherds	315
	040	2	Debitage	300
	040	3	Metal	1
	040	4	Core	1
	040	5	Eggshell	1
	040	6	Pigment	13
	040	7	Terrestrial	1
	040	8	Retouched Flake	1

Level/Feature	PD#	Bag#	Type	Count
	040	9	Lithic Ornament	1
	040	10	Retouched Flake	1
	040	11	Unmodified Bone	25
	040	12	Projectile Point	1
	040	13	Slab	1
	040	14	Slab	1
	040	15	Obsidian	1
	040	16	Hammerstone	1

### Excavation Unit 162N 120E

Many eroded rocks were found in southwest corner, so it was thought to have a wall. Rock continued into the second level, mostly in the southern half of unit. The third level was taken down deeper, to see if it was a wall, and it turned out there wasn't a wall. Modern glass was found in each level. This level produced the only biface found, as well as a single squash seed (Table 5).

**Table 5. Artifact/Samples from Unit 162N 120E.**

Level/Feature	PD#	Bag#	Type	Count
Level 1	039	1	Metate	1
	039	2	Glass	9
	039	3	Sherds	48
	039	4	Debitage	39
	039	5	Core	1
Level 2	041	1	Sherds	131
	041	2	Debitage	94
	041	3	Glass	16
	041	4	Pigment	2
	041	5	Unmodified Bone	2
	041	6	Core	1
	041	7	Biface	1
	041	8	Slab	1
	041	9	Core	1
	041	10	Core	1
	041	11	Core	1
	041	12	Core	1
	041	13	Core	1
Level 3	044	1	Debitage	153
	044	2	Sherds	195
	044	3	Seed	1
	044	4	Glass	5
	044	5	Quartz Crystal	1
	044	6	Unmodified Bone	13
	044	7	Rubber	1
	044	8	Pigment	1
	044	9	Chopper	1

Level/Feature	PD#	Bag#	Type	Count
	044	10	Slab	1
	044	11	Hammerstone	1
	044	12	Core	1
	044	13	Hammerstone	1

### Excavation Unit 164N 112E

A small piece of wall was found in the southeast porting of the unit that clearly is a continuation of the wall found in the 162N 112E unit. A large quantity of sherds, and especially debitage was found in unit, as well as two cores (Table 6).

**Table 6. Artifact/Samples from Unit 164N 111E.**

Level/Feature	PD#	Bag#	Type	Count
Level 1	029	1	Sherds	148
	029	2	Debitage	212
	029	3	Unmodified Bone	4
	029	4	Chopper	1
	029	5	Metal	1
	029	6	Core	1
	029	7	Core	1

### Excavation Unit 166N 106E

Clay-like soil was found throughout unit, with burned earth found in the northeast section of the unit. Charcoal was found throughout the unit, but concentrated in the northwest corner. Small pieces of rotted sandstone were found in the west portion of the unit. A major east-west wall was found in the unit. Artifacts were sparse, but found throughout the unit, with concentrations in the eastern portions. Bone was found in large quantity (Table 7).

**Table 7. Artifact/Samples from Unit 166N 106E.**

Level/Feature	PD#	Bag#	Type	Count
Level 1	061	1	Sherds	23
	061	2	Core	1
	061	3	Debitage	80
	061	4	Slab	1
	061	5	Mica	1
	061	6	Eggshell	1
	061	7	Unmodified Bone	27
	061	8	Metal	1
	061	9	Corn Cob	2
	061	10	Core	1

### Excavation Unit 166N 108E

There were many rocks on the surface, with a suspected wall. A wall running 70°/250° was discovered in the first level. The wall was composed of rocks of sandstone, cobbles, and shale, and adobe. On the south side of the wall, there was a big area in which we found a large concentration of burned earth and large pieces of charcoal. Artifacts were sparse (Table 8).

**Table 8. Artifact/Samples from Unit 166N 108E.**

Level/Feature	PD#	Bag#	Type	Count
Level 1	057	1	Sherds	30
	057	2	Debitage	16
	057	3	Unmodified Bone	2
	062	1	Debitage	40
	062	2	Sherds	37
	062	3	Unmodified Bone	4
	062	4	Core	1
	062	5	Core	1
	062	6	Core	1
	080	1	Float General Fill	1

### Excavation Unit 166N 112E

Only two rocks were found on the surface, and in the north central part of the unit. One more rock was found in the second level. A lot of hard, yellow, clay was found in the east half, and hard grey clay in the west half. Most artifacts were found in the southeast corner of the unit. The yellow clay in the unit seemed to form an arc. In the extreme northwest corner of the unit, a small wall fragment from the major 70°/250° wall runs through. Very few artifacts were found, but were relatively diverse (Table 9).

**Table 9. Artifact/Samples from Unit 166N 112E.**

Level/Feature	PD#	Bag#	Type	Count
Level 1	031	1	Sherds	38
	031	2	Debitage	27
	031	3	Hammerstone	1
Level 2	034	1	Debitage	16
	034	2	Sherds	25
	034	3	Metal	1
	034	4	Pigment	1
Level 3	069	1	Sherds	93
	069	2	Unmodified Bone	2
	069	3	Terrestrial	1

Level/Feature	PD#	Bag#	Type	Count
	069	4	Pigment	6
	069	5	Debitage	68
	069	6	Core	1
	069	7	Core	1
	069	8	Core	1

### Excavation Unit 166N 114E

Soil was very clayey throughout the unit. On the very first level, a hearth, Feature 7, was found. Abundant artifacts were found in south side of the unit, with few on the north side.

Feature 7 is an average size hearth, measuring 58x46x9 centimeters. It is a circular hearth with a basin shape profile. The fill was clean, with few rocks, no artifacts, and little charcoal. The bottom of the feature was clearly defined by an oxidized layer of dirt. A rodent hole was dug through the southern and western edge of the feature. Two floats were taken from Feature 7.

Only the north half was excavated in the second level, in order to expose a small wall corner, which was 28 centimeters wide. We knew the wall was there because it showed in the profile of the unit to the north. A moderate amount of artifacts were found in the first level, but few were found in the second level (Table 10).

**Table 10. Artifact/Samples from Unit 166N 114E.**

Level/Feature	PD#	Bag#	Type	Count
Level 1	071	1	Metate	1
	071	2	Core	1
	071	3	Core	1
	071	4	Sherds	159
	071	5	Debitage	75
	071	6	Plastic	1
	071	7	Retouched Flake	1
	071	8	Eggshell	9
	071	9	Unmodified Bone	3
Feature 7, Level 1	077	1	Float General Fill	1
	078	1	Float General Fill	1
Level 2	079	1	Debitage	17
	079	2	Sherds	11
	079	3	Unmodified Bone	7
	079	4	Pigment	1

### Excavation Unit 168N 112E

There were many rocks on the surface, and the major 70°/250° wall was revealed by the bottom of the first level, as well as a possible crosswall. The first level had few artifacts or charcoal.

We confirmed the crosswall on level 2, but artifacts were still scarce. The edges of the wall were defined on the third level, and many eggshell fragments were found in the northwest, as well as gypsum in the northeast corner. Artifacts were sparse throughout the unit (Table 11).

**Table 11. Artifact/Samples from Unit 168N 112E.**

Level/Feature	PD#	Bag#	Type	Count
Level 1	020	1	Sherds	17
	020	2	Debitage	29
	020	3	Core	1
	020	4	Hammerstone	1
	020	5	Chopper	1
Level 2	028	1	Chopper	1
	028	2	Sherds	5
	028	3	Core	1
	028	4	Debitage	7
Level 3	032	1	Sherds	2
	032	2	Core	1
	032	3	Debitage	9
	032	4	Eggshell	43
	032	5	Gypsum	50

### Excavation Unit 168N 114E

The entire unit was ridden with wallfall and rocks. The first four levels focused solely on the north half. Levels 1-3 revealed the northern edge of the major 70°/250° wall, which, upon later inspection in level 4, came to an abrupt halt in the central area of the unit.

We then excavated the south side in one “full cut”, meaning we took it down levels 1-4 in one provenienced unit, taking it down about 60 centimeters. A small wall was discovered in the profile in the south half of the unit, which may have been missed in the excavation, as it was so crappy.

It is unknown if the large wall in the center of the unit ends so abruptly because of prehistoric remodeling or modern destruction. Artifacts were scarce, but there was an increase in the fourth level in the north half, which included the discovery of a bone ornament (Table 12).

**Table 12. Artifact/Samples from Unit 168N 114E.**

Level/Feature	PD#	Bag#	Type	Count
Level 1, North Half.	021	1	Sherds	17
	021	2	Debitage	19

Level/Feature	PD#	Bag#	Type	Count
Level 2, North Half	025	1	Debitage	5
	025	2	Sherds	18
Level 3, North Half	030	1	Unmodified Bone	5
	030	2	Debitage	11
	030	3	Sherds	29
	030	4	Metal	1
	030	5	Hammerstone	1
Level 4, North Half	033	1	Sherds	44
	033	2	Debitage	37
	033	3	Unmodified Bone	1
	033	4	Hammerstone	1
	033	5	Bone Ornament	1
Level 1-4, South half	045	1	Sherds	17
	045	2	Debitage	29
	045	3	Pigment	5
	045	4	Unmodified Bone	5

### Excavation Unit 168N 116E

A poorly defined, crappy wall was found in the southern portion of the unit. After the first level, we decided to only take the south half of the unit down. The soil on the east side of the wall was a different color and texture than elsewhere, so we decided to call it a feature, Feature 2, which was in the third level.

Feature 2 is an indeterminate pit with an apparent wall forming the western boundary. It continued over to the north/south wall in the next unit to the east, but we could not find the southern boundary. Feature 2 measured 1.9x0.75x0.2, but these are incomplete measurements, as we do not have the southern edge.

We found quite a few artifacts, including two beads and a retouched flake. We also found four rather unique artifacts, which were a small piece aluminum foil, a shoelace, a cigarette butt, and an odd silver colored ball. The ball is of unknown material, but was listed as metal (Table 13).

**Table 13. Artifact/Samples from Unit 168N 116E.**

Level/Feature	PD#	Bag#	Type	Count
Level 1	038	1	Sherds	51
	038	2	Debitage	115
	038	3	Core	1
	038	4	Core	1
	038	5	Core	1
	038	6	Pestle	1
	038	7	Lithic Ornament	1
	038	8	Lithic Ornament	1
	038	9	Metal	1

Level/Feature	PD#	Bag#	Type	Count
	038	10	Unmodified Bone	2
	038	11	Pigment	2
	038	12	Metal	1
	038	13	Mica	1
Level 2	042	1	Sherds	86
	042	2	Debitage	146
	042	3	Unmodified Bone	7
	042	4	Pigment	4
	042	5	Cloth	1
	042	6	Metal	1
	042	7	Slab	1
	042	8	Slab	1
	042	9	Core	1
	042	10	Metate	1
Level 3	052	1	Sherds	52
	052	2	Debitage	106
	052	3	Unmodified Bone	14
	052	4	Mano	1
	052	5	Pigment	7
	056	1	Sherds	62
	056	2	Debitage	115
	056	3	Unmodified Bone	4
	056	4	Core	1
	056	5	Retouched Flake	1
	056	6	Metal	1
	056	7	Metal	1
Feature 2, Level 3	046	1	Sherds	23
	046	2	Debitage	55
	046	3	Unmodified Bone	15
	046	4	Slab	1
	046	5	Mica	1
	046	6	Pigment	6
	046	7	Paper	1

### Excavation Unit 168N 118E

One wall, which was often used as a walkway during the excavation, measured 60 centimeters across and was discovered in the first level. The wall was mostly mortar, with few rocks, and the rocks were mostly sandstone and shale. The unit was excavated one more level, and a metate fragment was found, and believed to have been a part of the wall which fell. Items recovered from the unit are shown below in Table 14.

**Table 14. Artifact/Samples from Unit 168N 118E.**

Level/Feature	PD#	Bag#	Type	Count
Level 1	037	1	Unmodified Bone	1
	037	2	Gypsum	2
	037	3	Debitage	44
	037	4	Sherds	51
	037	5	Core	1
Level 2	043	1	Sherds	57
	043	2	Debitage	48
	043	3	Unmodified Bone	1
	043	4	Pigment	4
	043	5	Metate	1
	043	6	Hammerstone	1
	043	7	Gypsum	1

**Excavation Unit 168N 120E**

Several rocks were found in the southeast corner, but are believed to be wallfall. Level 2 produced several small to medium size rocks and chinkers. Feature 1 was discovered in level 2.

Feature 1 is a shallow thermal hearth measuring 56x44x6. The feature fill consisted of ash, charcoal, and burned earth, and ten pieces of corn cob. All fill was collected as a float.

Level 3 had a few rocks, and quite a bit of ash and charcoal, particularly on the east side. Feature 3 was found here.

Feature 3 was found in the southeast corner of the unit, and extended into the unit to the east (168N 120E). Only the west half was excavated in this unit. The feature is oval in plan view and has a basin shaped profile, and measures 40x42x14 for the whole feature, across both units.

Moderate amounts of a wide variety of artifacts were found. Items recovered from the unit are shown below in Table 15.

**Table 15. Artifact/Samples from Unit 168N 120E.**

Level/Feature	PD#	Bag#	Type	Count
Level 1	036	1	Sherds	114
	036	2	Debitage	90
	036	3	Pigment	2
	036	4	Unmodified Bone	36
	036	5	Obsidian	1
	036	6	Gypsum	9
	036	7	Retouched Flake	1
	036	8	Core	1
	036	9	Core	1

Level/Feature	PD#	Bag#	Type	Count
	036	10	Core	1
	036	11	Core	1
	036	12	Core	1
Level 2	047	1	Unmodified Bone	54
	047	2	Eggshell	1
	047	3	Pigment	3
	047	4	Mica	2
	047	5	Sherds	104
	047	6	Debitage	76
	047	7	Gypsum	32
	047	8	Slab	1
	047	9	Slab	1
	047	10	Slab	1
	047	11	Retouched Flake	1
Feature 1, Level 2	049	1	Float General Fill	1
Feature 1, Level 2	050	1	Corn Cob	10
Level 3	055	1	Sherds	89
	055	2	Corn Cob	1
	055	3	Mica	2
	055	4	Pigment	14
	055	5	Projectile Point	1
	055	6	Gypsum	12
	055	7	Unmodified Bone	37
	055	8	Core	1
	055	9	Debitage	76
	058	1	Float General Fill	1
	059	1	Float General Fill	1
Feature 3, Level 3	064	1	Float General Fill	1
Feature 3, Level 3	065	1	Sherds	1
	065	2	Debitage	1

### Excavation Unit 168N 122E

Level 1 had a number of chinkers. There was decomposing sandstone and charcoal, as well.

Level 2 had lots and charcoal and deteriorating sandstone. There were a number of rocks that were thought to be possible wall fall. Most of the large lithic tools found were in the northeast corner of the unit. There was also a lot of charcoal and ash on the bottom of level 2.

Level 3 revealed a use surface with one feature, Feature 3.

Feature 3 was described in the entry for the unit to the west (168N 120E).

A small to moderate amount of artifacts were found of level 4 features 4 and 6 were found on level 4.

Feature 4 is a circular hearth with a basin shaped profile, measuring 68x55x8. The bottom was defined by an oxidized layer of dirt.

Feature 6 is a formal post hole measuring 12x14x32. The top of the post hole had two medium sized cobbles on the north and south sides, as well as some abode capping material. Another cobble was in the bottom.

Quite a few artifacts were found throughout the unit, including nine cores on level 3 alone (Table 16).

**Table 16. Artifact/Samples from Unit 168N 122E.**

Level/Feature	PD#	Bag#	Type	Count
Level 1	048	1	Sherds	130
	048	2	Debitage	46
	048	3	Core	1
	048	4	Unmodified Bone	14
	048	5	Slab	1
Level 2	054	1	Core	1
	054	2	Chopper	1
	054	3	Core	1
	054	4	Hammerstone	1
	054	5	Hammerstone	1
	054	6	Hammerstone	1
	054	7	Debitage	125
	054	8	Sherds	152
	054	9	Gypsum	1
	054	10	Unmodified Bone	14
	054	11	Projectile Point	1
	054	12	Projectile Point	1
Level 3	063	1	Unmodified Bone	21
	063	2	Lithic Ornament	12
	063	3	Gypsum	12
	063	4	Ladle	199
	063	5	Debitage	120
	063	6	Sherds	116
	063	7	Polishing Stone	1
	063	8	Hammerstone	1
	063	9	Core	1
	063	10	Core	1
	063	11	Core	1
	063	12	Core	1

	063	13	Hammerstone	1
	063	14	Core	1
	063	15	Core	1
	063	16	Core	1
	063	17	Core	1
	063	18	Core	1
	081	1	Float General Fill	1
Feature 3, Level 3	068	1	Float General Fill	1
Level 4	070	1	Sherds	27
	070	2	Debitage	33
	070	3	Unmodified Bone	7
	070	4	Corn Cob	2
Feature 4, Level 4	072	1	Float General Fill	1
Feature 4, Level 4	073	1	Float General Fill	1
Feature 6, Level 4	076	1	Float General Fill	1

### Excavation Unit 168N 124E

Level 1 was very clayey, but started becoming laden with ash and charcoal. A float was taken because of the ash and charcoal.

Charcoal and ash found throughout level 2 and possible wallfall in southern portion of unit, along with several small pieces on jacal and burned sandstone.

In level 3, a hearth was uncovered in the extreme northeast corner of the unit. Only a portion of the hearth was excavated because it continued into the adjacent unexcavated units to the north, northeast, and east.

Feature 5 is a hearth with a partial measurement of 50x47x26. The feature was full of ash charcoal and sandstone. In the area closest to the northeast unit wall, there is a slight depression which may have been used to add more coals. Artifacts were found after sifting through soil collected during excavation.

Very large quantities of artifacts were found in this unit, and it also has nine cores from level 3. Items recovered from the unit are shown below in Table 17.

**Table 17. Artifact/Samples from Unit 168N 124E.**

Level/Feature	PD#	Bag#	Type	Count
Level 1	051	1	Sherds	269
	051	2	Debitage	213
	051	3	Unmodified Bone	81
	051	4	Pigment	10
	051	5	Corn Cob	2

Level/Feature	PD#	Bag#	Type	Count
	051	6	Core	1
	051	7	Hammerstone	1
	051	8	Slab	1
	051	9	Hammerstone	1
	051	10	Chopper	1
	051	11	Ladle	1
	060	1	Float General Fill	1
Level 2	066	1	Sherds	144
	066	2	Debitage	243
	066	3	Slab	1
	066	4	Unmodified Bone	40
	066	5	Pigment	4
	066	6	Projectile Point	1
	066	7	Hammerstone	1
	066	8	Slab	1
	066	9	Plastic	1
	066	10	Hammerstone	1
Level 3	067	1	Debitage	400
	067	2	Sherds	77
	067	3	Unmodified Bone	48
	067	4	Corn Cob	3
	067	5	Pigment	1
	067	6	Mano	1
	067	7	Awl	1
	067	8	Core	1
	067	9	Core	1
	067	10	Gypsum	4
	067	11	Core	1
	067	12	Core	1
	067	13	Core	1
	067	14	Core	1
	067	15	Core	1
	067	16	Core	1
	067	17	Core	1
	067	18	Hammerstone	1
Feature 5, Level 3	074	1	Float General Fill	1
	075	1	Debitage	8
	075	2	Sherds	1
	075	3	Lithic Ornament	1
	075	4	Corn Cob	2
	075	5	Unmodified Bone	1
	075	6	Lithic Ornament	1
	075	7	Lithic Ornament	1
075	8	Lithic Ornament	1	

## REFERENCES

Wheelbarger, Linda

2006a Puebloan Communities on the South Side of the Middle San Juan River. Draft dated June 30, 2006. Paper prepared for the Salmon Working Conference, organized by Paul Reed. On file, San Juan College Cultural Resources Management Program, Farmington, New Mexico.

2006b Totah Archaeological Project Update. Paper presented at 2006 Pecos Conference, Navajo Lake, New Mexico. On file, San Juan College Cultural Resources Management Program, Farmington, New Mexico.

Kotyk, Edward

1999 Totah Archaeological Project Field School Excavation Manual. On file, San Juan College Cultural Resources Management Program, Farmington, New Mexico.